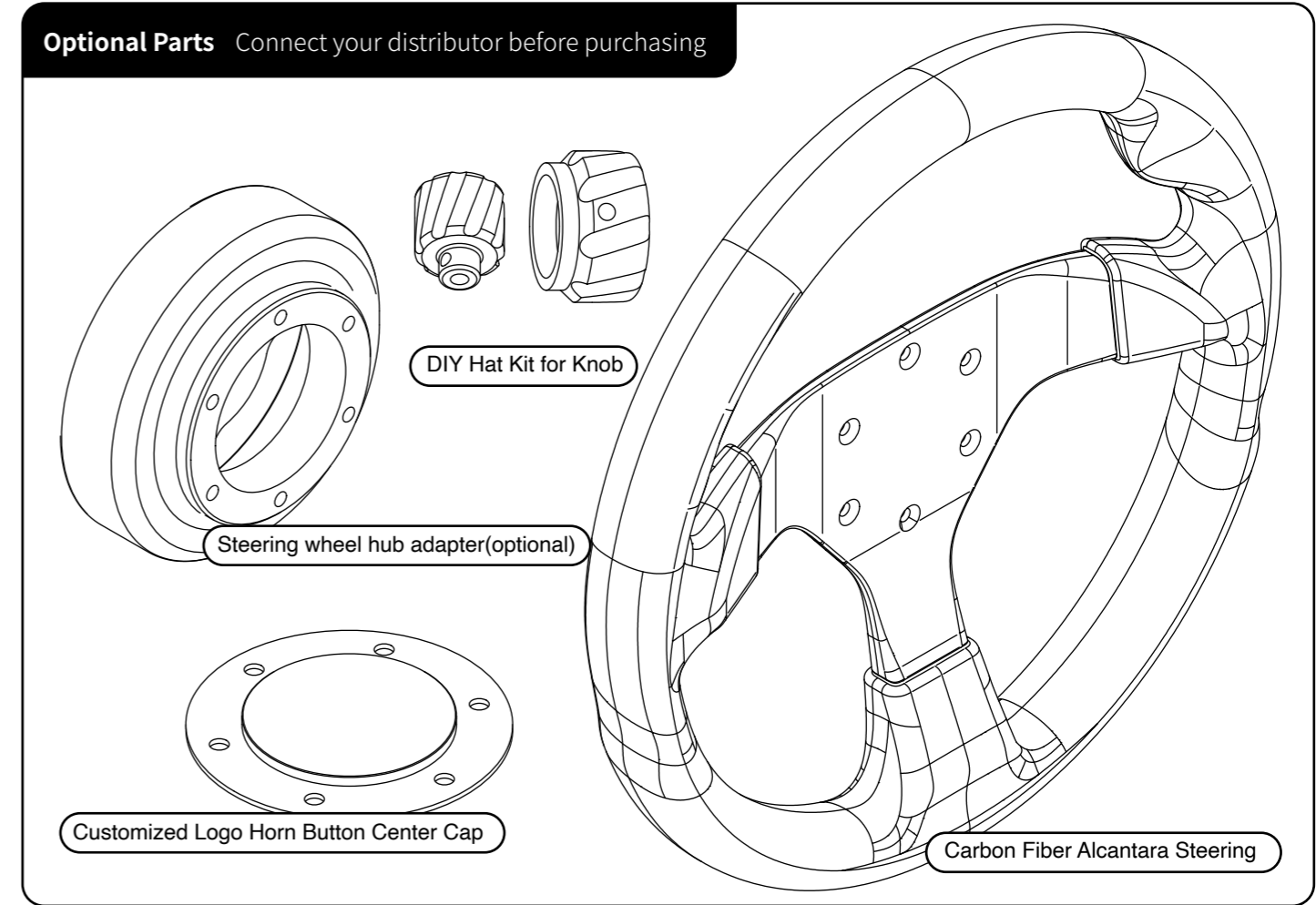
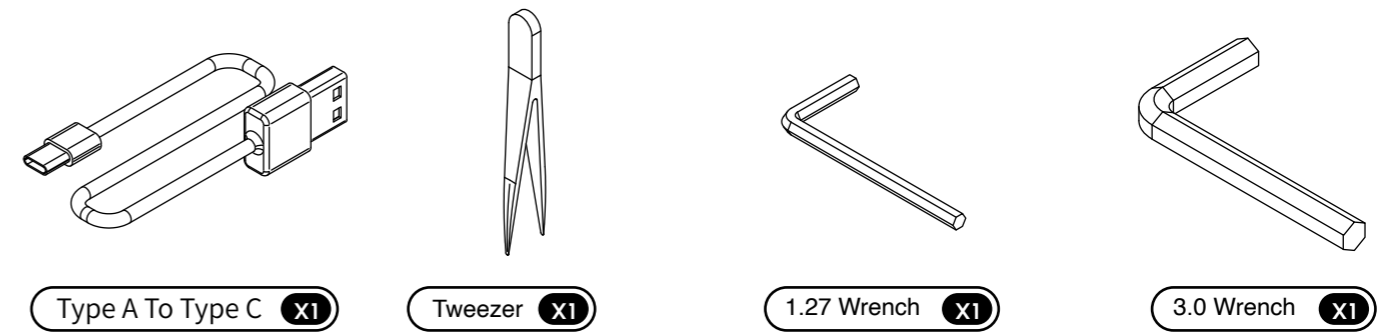
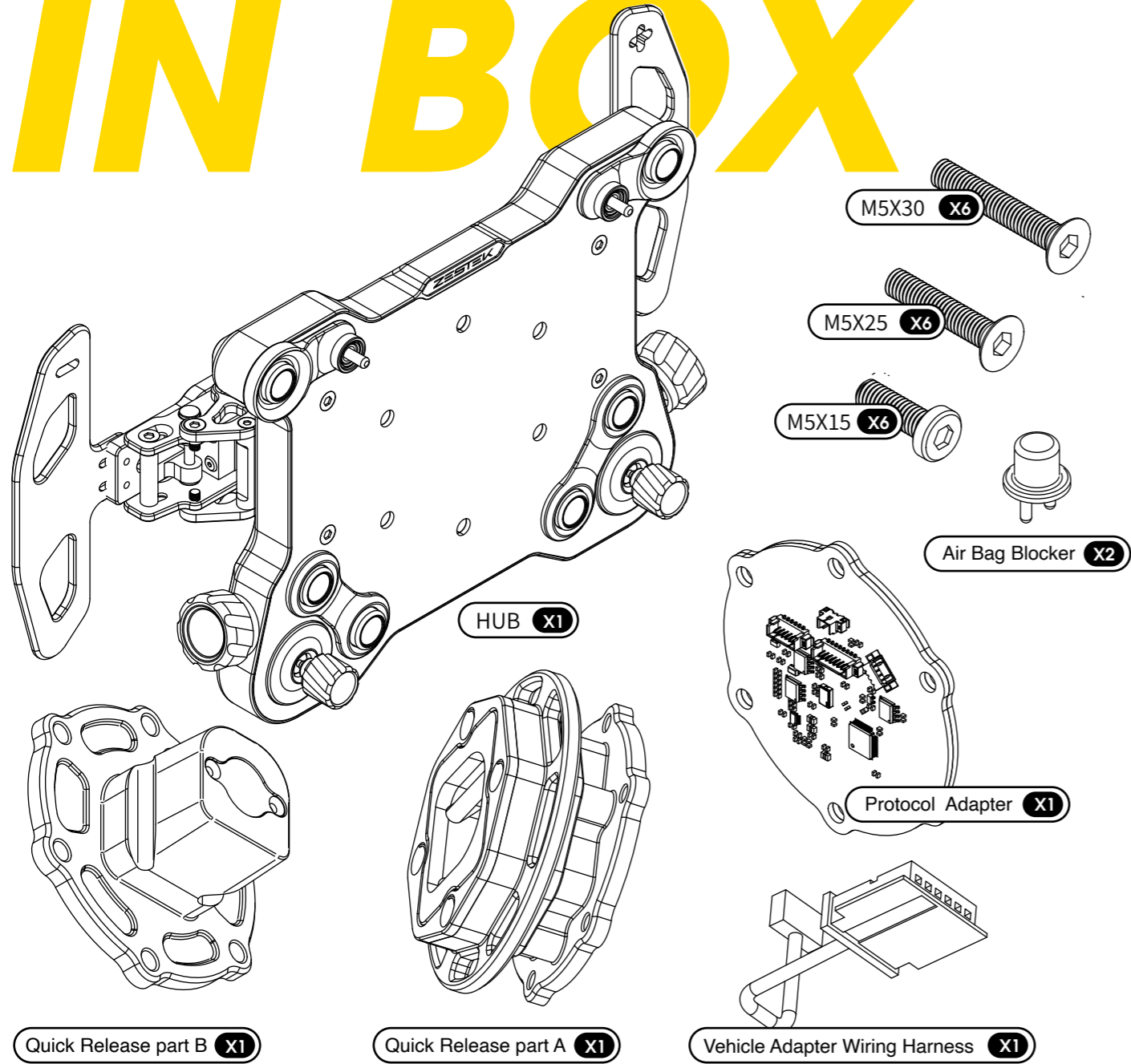


# ZESTEK



ZESTEK.NET

# IN BOX



\* The carbon fiber center cap and stickers enclosed in the box are not shown here.



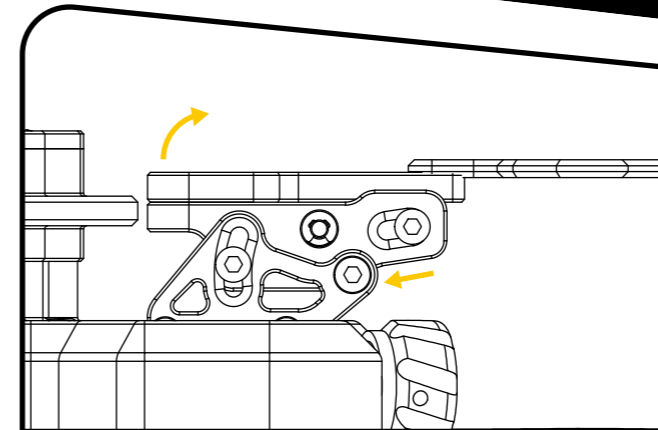
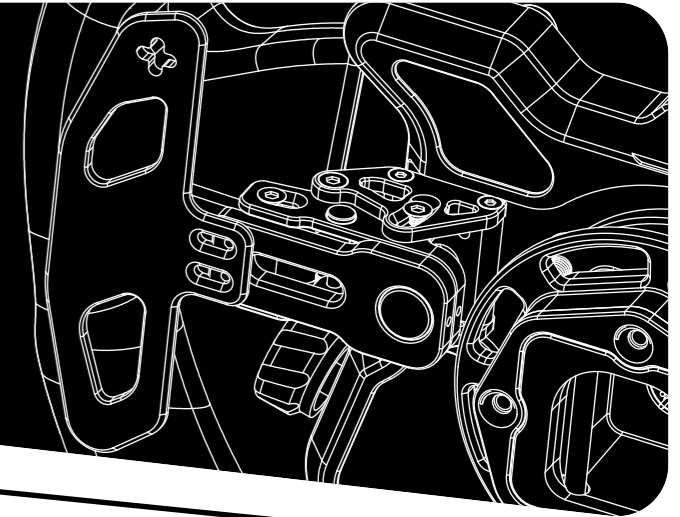
**ONLY FOR RACING**

It is dangerous to drive on street without airbag

**DO NOT do that.**

## Adaptable Magnetic Pedal Shifters

Adapting the pedal shifters in multiple directions to fulfil abundant DIY demands and to help you drive more handily.

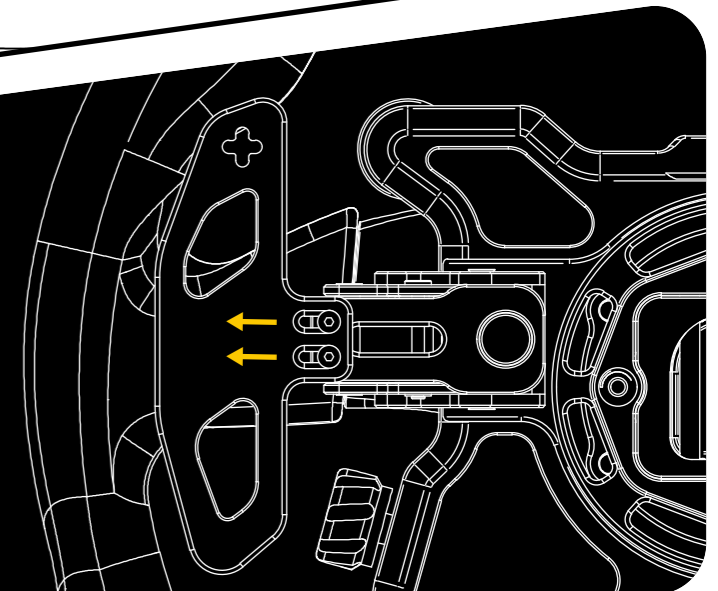


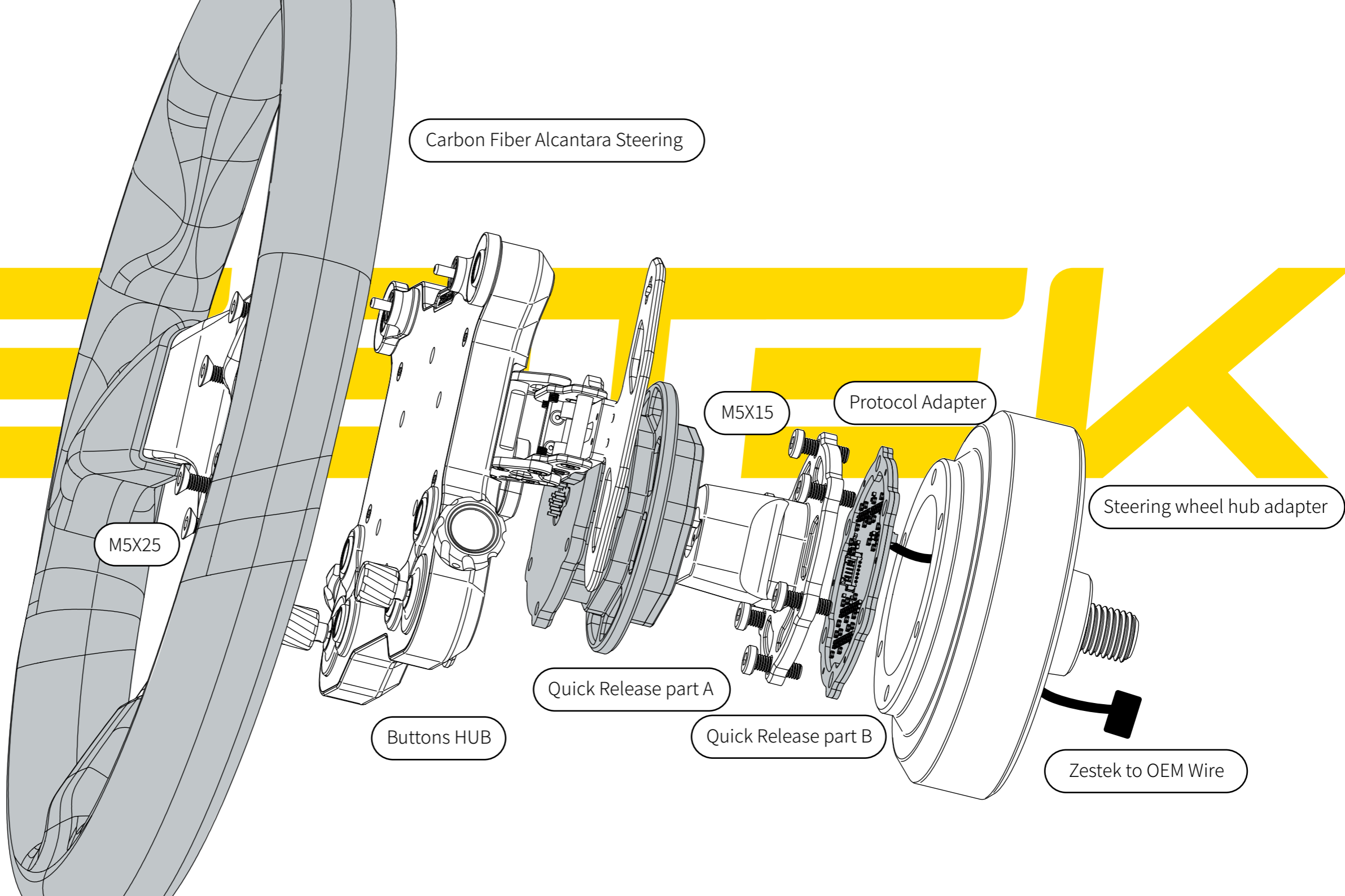
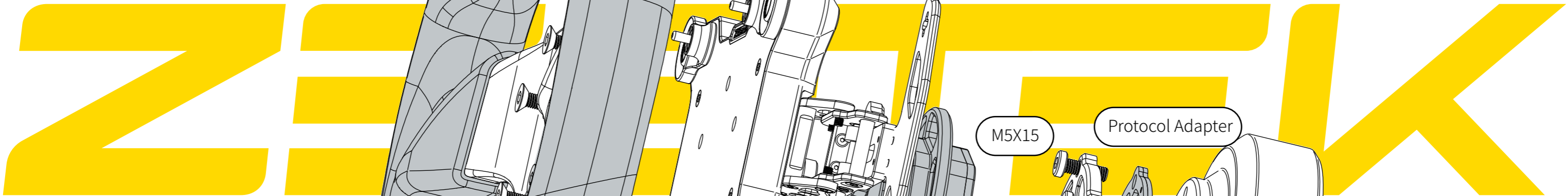
Loosen four screws on the left to adjust the distance between hands and pedals.

Loosen two screws on the right to adjust the travel of the pedals and offer the best pressing force feedback for you.

Tighten all screws after adjustment.

Loosing the screws on the back to adjust the distance between the pedals and the edge of the steering wheel, which allows OEM HUB to support the steering wheels from 310 to 350.





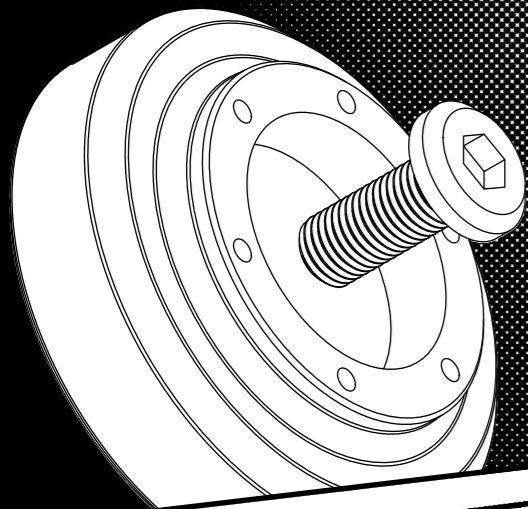
**⚠ Attention**

Please make sure the OEM HUB is installed by professional modification store.

If you decide to install by yourself, please follow the guidebook step by step.

A tiny mistake can damage the HUB.



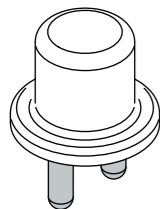


### STEP 1

Disassemble the original steering wheel, and install the Steering wheel hub adapter from the third party.  
Tighten the screw of the original steering wheel.  
Attention: The installation of the Steering wheel hub adapter would be different referring to different cars. Please make sure to install it in professional stores.

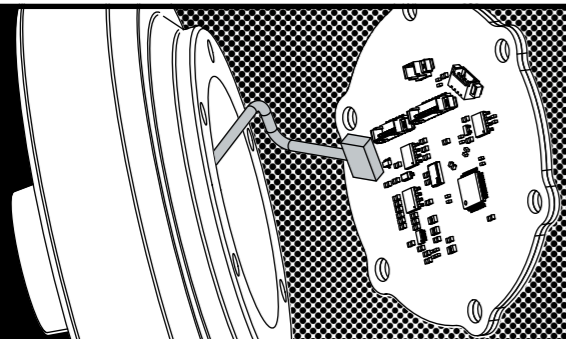
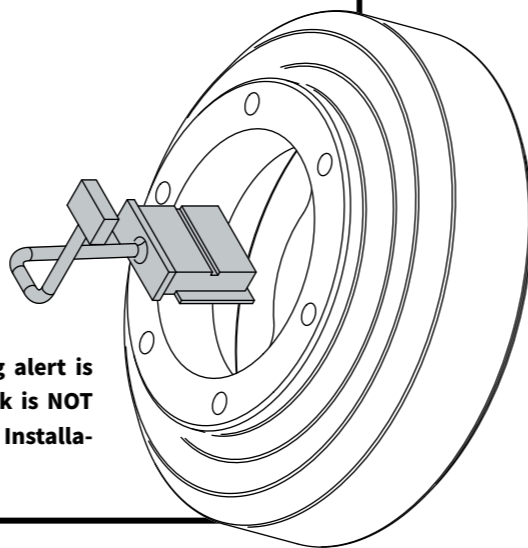
### STEP 2

Replace the original steering wheel harness with the one from Zestek.  
Replace the airbag with the airbag blocker. (Unnecessary if the blocker is not enclosed in the package)



#### Attention

**The product is for racing only. Blocking the airbag alert is considered as an action out of personal will. Zestek is NOT responsible for loss in street accidents in all forms. Installation is deemed to be consent.**

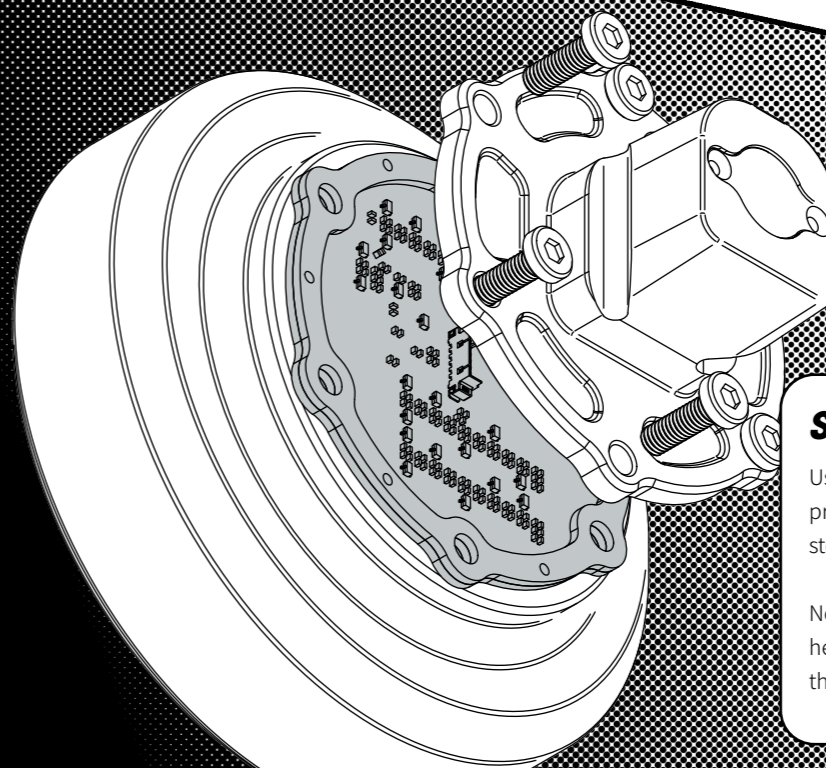
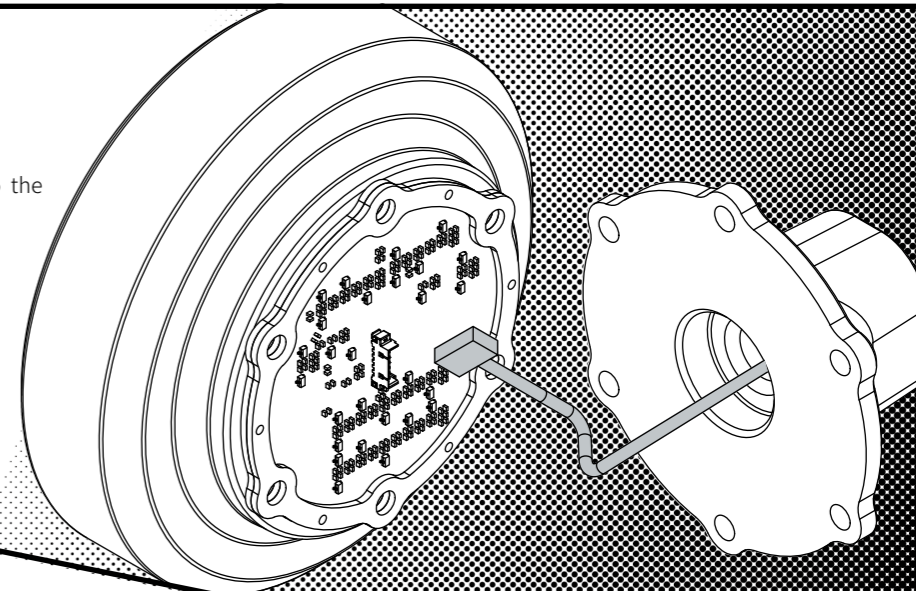


### STEP 3

Connect the vehicle adapter wiring harness to the protocol adapter.

### STEP 4

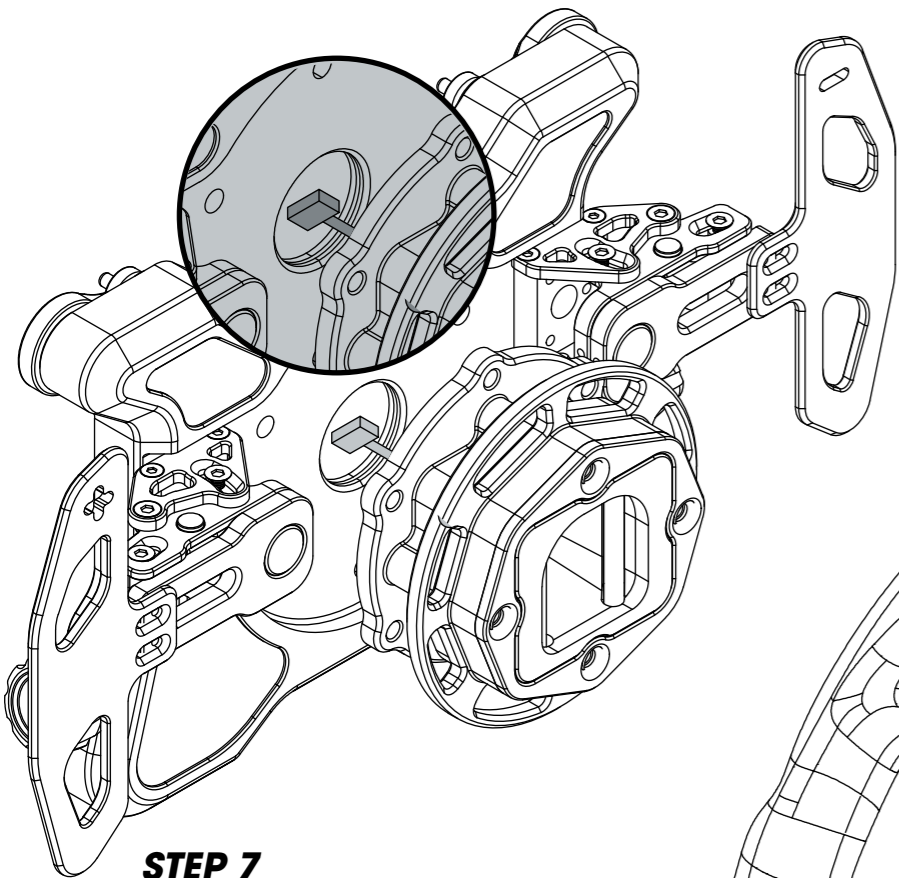
Connect the protocol adapter to the quick release part B.



### STEP 5

Use the provided M5x15 screws to tighten the protocol adapter and quick release part B to the steering wheel hub adapter as shown in the figure.

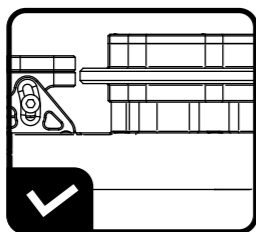
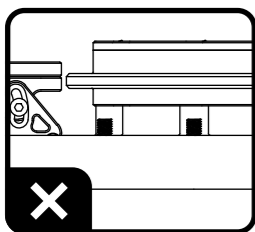
Note: Please use provided screws or screws with heads that are below 3mm to prevent obstructing the quick release from seating properly.



### STEP 7

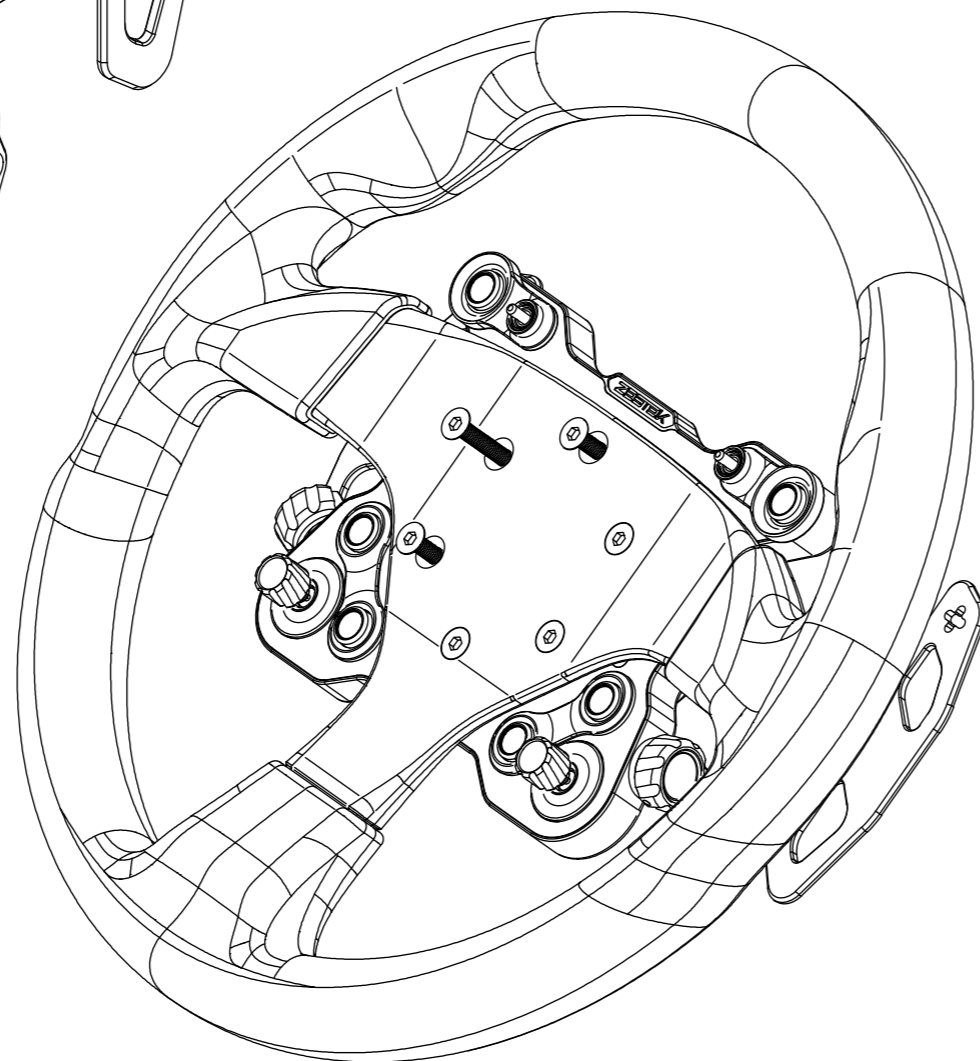
Use M5x25 screws provided to lock the steering wheel to the quick release part A.

Note: Screws lengths needed may vary with different models of steering wheels or horn covers. If you use third-party screws, please pay attention to the length of the screw, which may block the quick release.



### STEP 6

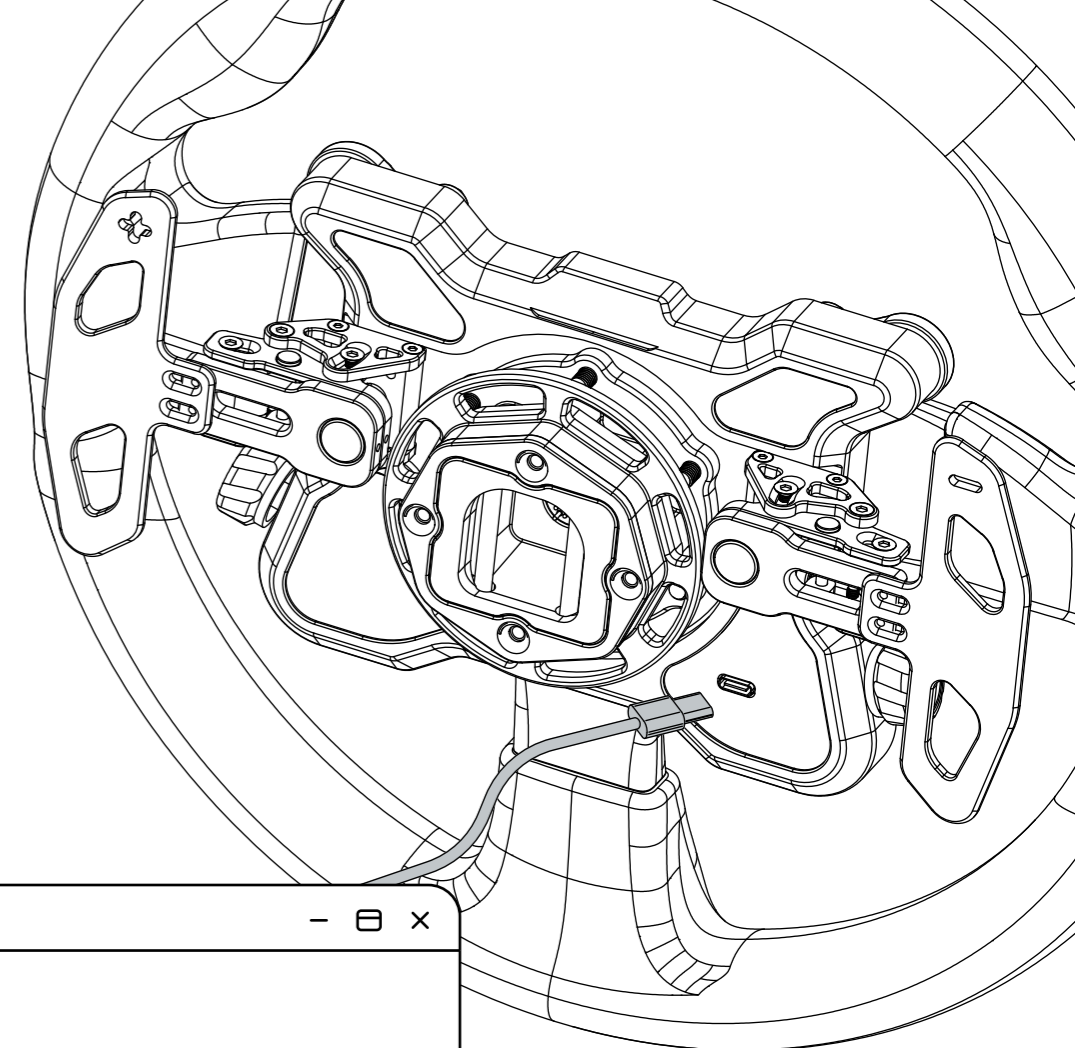
Plug in the wire harness of the quick release part A to the socket inside the button hub



### STEP 8

Connect the hub to the PC running **Win 10 or Win 11.**

Launch OEM HUB Studio to program the switches, set the color and brightness of the LEDs and create a local configuration file.



**Software**

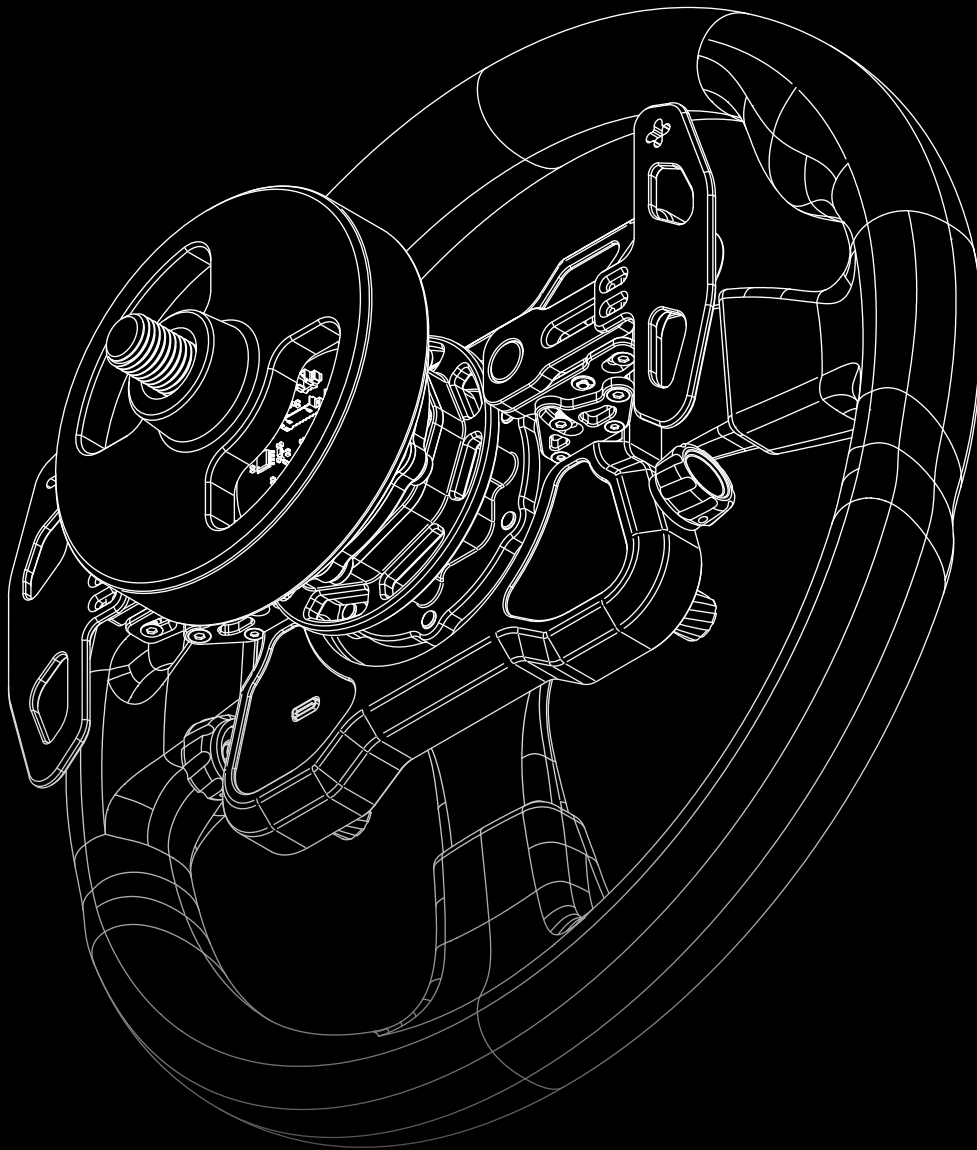
Contact your distributor to get the latest software.

You can also download the software from our support center: [www.zestek.net](http://www.zestek.net)

**Have Fun**

# DONE





**ZESTEK**